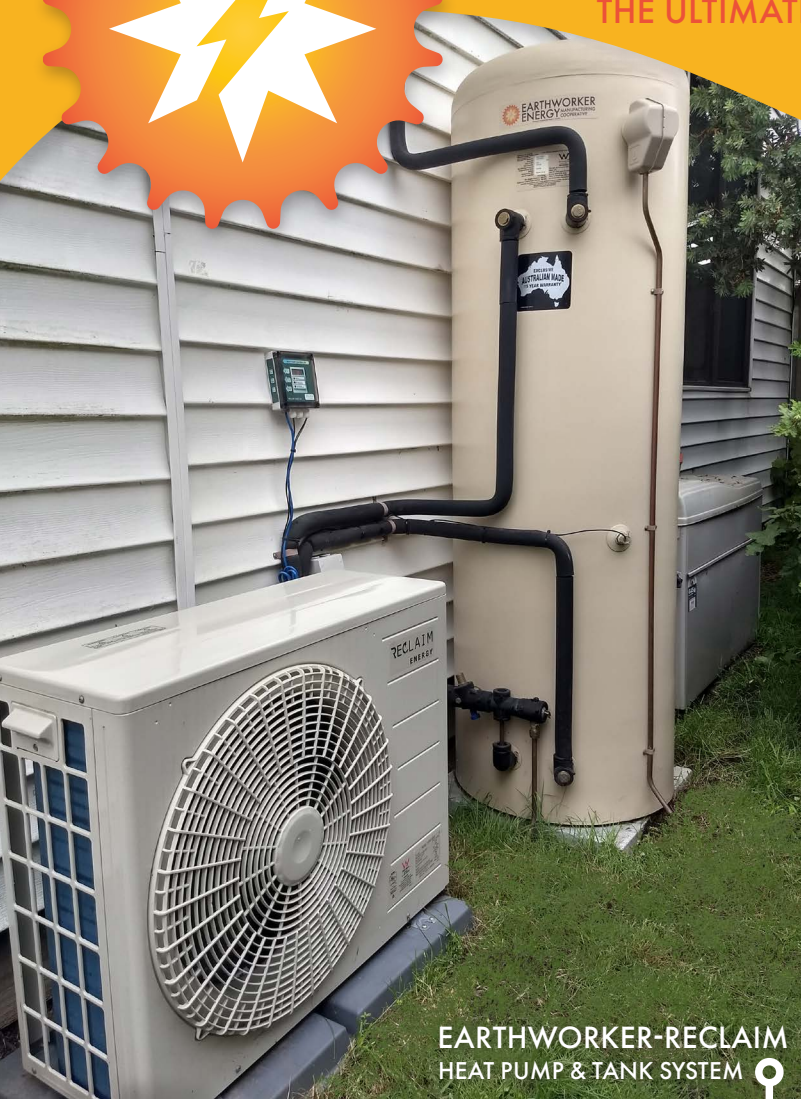


EARTHWORKER-RECLAIM

CO² HEAT PUMP HOT WATER SYSTEMS

THE ULTIMATE IN ENERGY EFFICIENT HOT WATER HEATING

High performance Reclaim Energy heat pump with Premium Australian-Made Stainless Steel storage tank



EARTHWORKER-RECLAIM
HEAT PUMP & TANK SYSTEM

Earthworker Energy Manufacturing Cooperative premium Australian-made hot water storage tanks use corrosion-resistant marine grade stainless steel for a long life, and come with a 15 year warranty.

Ours are the only tanks available that use our distinctive patented recycled polymer casing, which acts as a 2nd layer of insulation - providing outstanding thermal performance, and making them famously sleek, rust-free and extra durable.

15 YEAR
TANK
WARRANTY

6 YEAR
HEAT PUMP
WARRANTY

GOVERNMENT
REBATES
AVAILABLE



HEAT PUMP

Heat Pumps extract renewable energy - in the form of heat from the air - to make water heating more efficient, creating an energy output 3-5 times as high as the electricity input to run it!

Our systems are simple to install and don't require roof space, allowing you to utilise solar energy wherever you are.

The Japanese-made heat pump has been custom designed for Australian conditions, heating hot water to 63°C without requiring electric backup, even at an outside temperature of -10°C.

KEY FEATURES

- Quietest system available with an average noise level of 37dB
- 80% less energy used vs electric hot water
- Marine-grade stainless steel tank for long life
- CO² refrigerant naturally environmentally friendly & effective in cold conditions
- High COP (>5) creates high heat from low energy input
- Recycled polymer tank case provides extra insulation and durability
- ValveCosy PTR insulator included
- Controller allows household control over energy costs and consumption
- Ease & flexibility of installation
- State & Federal rebates available

CLEVER CONTROLLER

Interactive controls and monitoring allow households to take control over their energy at the touch of a button. Five presets allow householders to manage energy consumption in line with their needs - integrating hot water with a Solar PV system, or on a continuous or Off-peak mode of operation. A "One Shot Boost" function ensures you can have hot water whenever you need it.

Australian Made Controller with 2 year warranty



HEAT PUMP SPECIFICATIONS

HEAT OUTPUT AT 30 °C AMBIENT/24 °C COLD WATER INLET	kW	4.8
ELECTRIC INPUT AT 30 °C AMBIENT/24 °C COLD WATER INLET	kW	0.86
COP AT 30 °C AMBIENT/24 °C COLD WATER INLET	-	5.6
STANDBY POWER CONSUMPTION	kW	0.0036
HEAT PUMP POWER SUPPLY (SINGLE PHASE)	V/Hz	240V/50 Hz (DEDICATED CIRCUIT)
CONTROLLER POWER SUPPLY (SINGLE PHASE)	V/Hz	240V/50 Hz (GPO PLUG)
HEAT PUMP REFRIGERANT	-	CO ² (R744)
HEAT PUMP HOT WATER DELIVERY TEMPERATURE	C	63
RANGE OF OPERATING AMBIENT TEMPERATURE	C	-10 TO 43
HEAT PUMP UNIT WEIGHT	KG	48
HEAT PUMP LOCATION	-	OUTDOOR
NOISE LEVEL	dB	37
DIMENSION (H x W x D)	MM	675 x 825 x 300
RAIN RESISTANCE	-	IP*4
WATER PORT CONNECTIONS (INLET / OUTLET)	INCH/MM	1/2" BSP, 12.7MM



TANK SPECIFICATIONS

VOLUME (DELIVERY)	L	160	250	315	420
SYSTEM MODEL #	-	REHP-CO2-160SSEW	REHP-CO2-250SSEW	REHP-CO2-315SSEW	REHP-CO2-420SSEW
DRY WEIGHT	KG	52	62	70	115
PTR PRESSURE	kPA	700	700	700	700
PORT CONNECTIONS	INCH/MM	3/4" BSP, 20MM	3/4" BSP, 20MM	3/4" BSP, 20MM	3/4" BSP, 20MM
DIAMETER	MM	620	620	620	700
HEIGHT	MM	1140	1620	1990	1880
TANK LOCATION	-	INDOOR OR OUTDOOR, WITHIN 10M OF HEAT PUMP			

ValveCosy PTR insulator on every tank



Worker owned Cooperative. Made in Morwell

The Earthworker Energy Manufacturing Cooperative is a worker-run factory in the Latrobe Valley. We're working to build new ways to meet our needs – supporting unionised 'new energy' manufacturing jobs, tackling climate change, democratising workplaces, and helping households reduce their energy bills.

We're a proud part of the broader Earthworker Cooperative project. You can become a member of the Earthworker Cooperative to support our work, access discounts, and help 'take the power back' by switching your electricity provider to Cooperative Power Australia. www.earthworker.coop



www.earthworkerenergy.coop

Earthworker Energy Manufacturing Cooperative operates on Gunaikurnai Country. Always will be Aboriginal Land.